

The Earth's Lower Mantle and Core

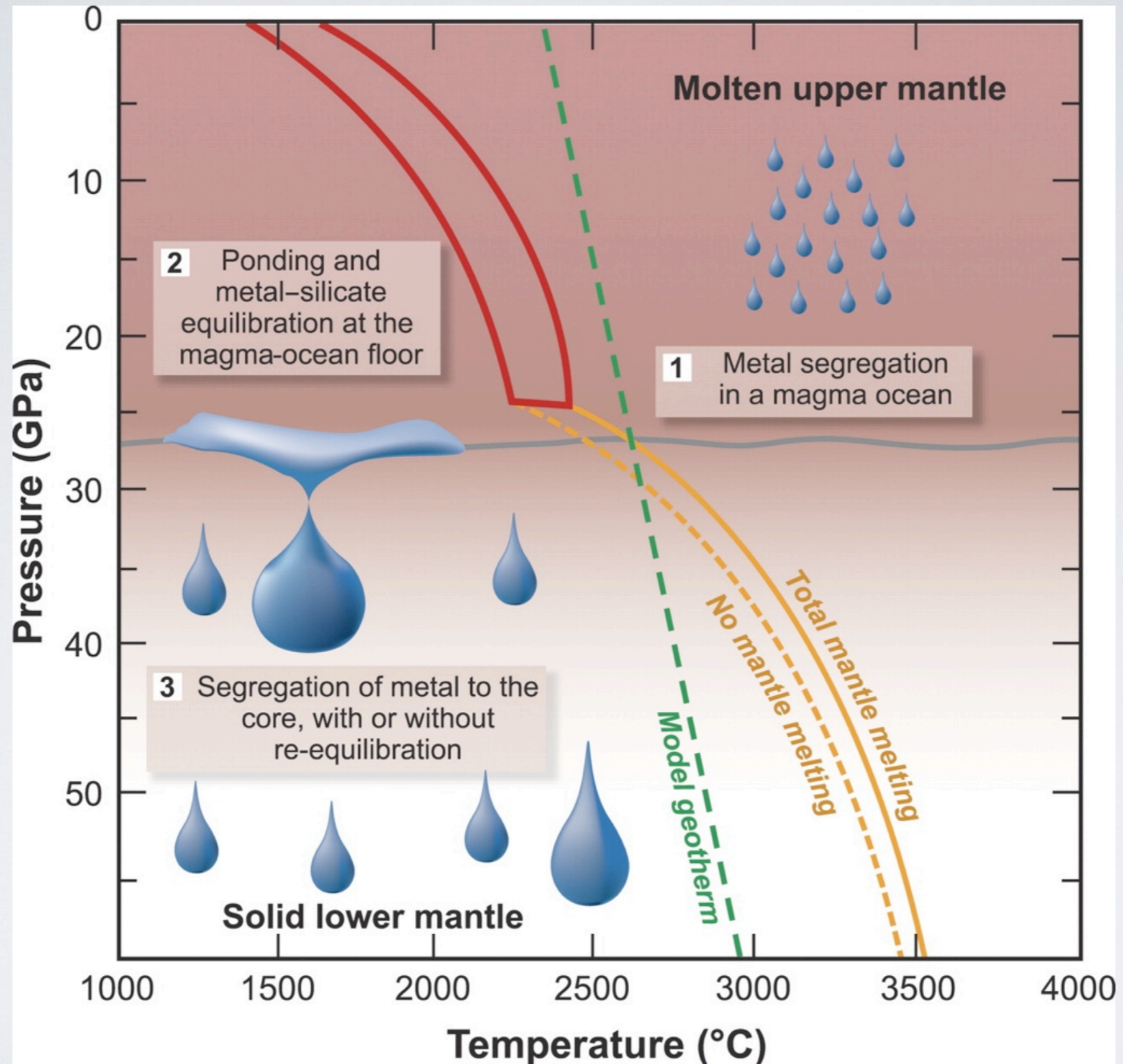


FIGURE 1 Metal segregation in a magma ocean. The ocean's depth is limited by a change in melting slope due to stabilization of silicate perovskite. Metal segregated from the magma ocean [1] may pond at its base [2] and then descend as droplets or diapirs with little equilibration with depth [3]. Alternatively, descent through a solid matrix could operate by percolation, which would enhance higher-P re-equilibration. AFTER WALTER (1999)